

# Stormwater Inspections to BMP Improvements - What Works?

Maggie Monahan, P.E.

Senior Water Resource Control Engineer

November 14, 2019



# Industrial & Construction Stormwater Section



**Maggie  
Monahan**

Sr. WRC  
Engineer



**Joe  
Monical**

WRC  
Engineer



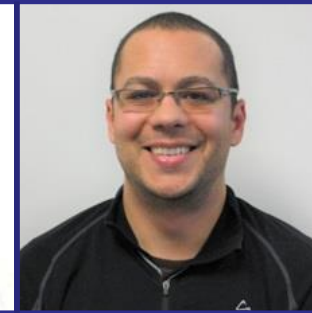
**Elyse  
Heilshorn**

WRC  
Engineer



**Devender  
Narala**

WRC  
Engineer



**Joseph  
Martinez**

Scientific  
Aid

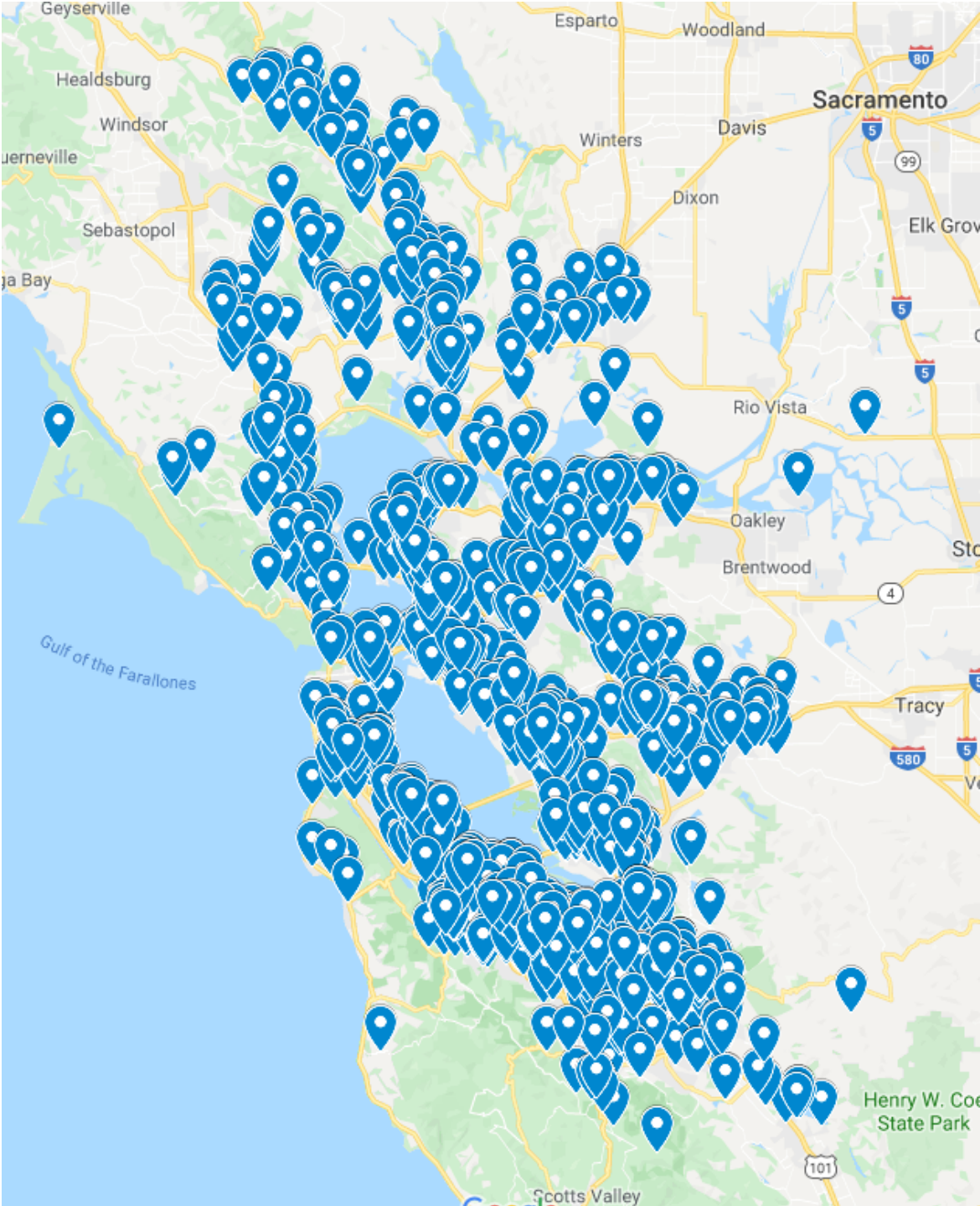


**Sooren  
Moosavy**

Scientific  
Aid



# Active Construction Sites enrolled in the CGP (11/13/19)



# Outline

- Case example
- General Challenges
- Key Takeaways



# Case example

- Risk Level 2 site, with high sediment risk due to steep slopes
- Unannounced inspection
- Project in grading phase
- Observations
  1. Outdated stormwater pollution prevention plan
  2. Inadequate or failing sediment and perimeter controls
  3. Lack of erosion controls

# Inspection Observations



# Corrective Actions



# Inspection Observations



# Corrective Actions



Silt fence has been repaired at base of slope.





# Corrective Actions



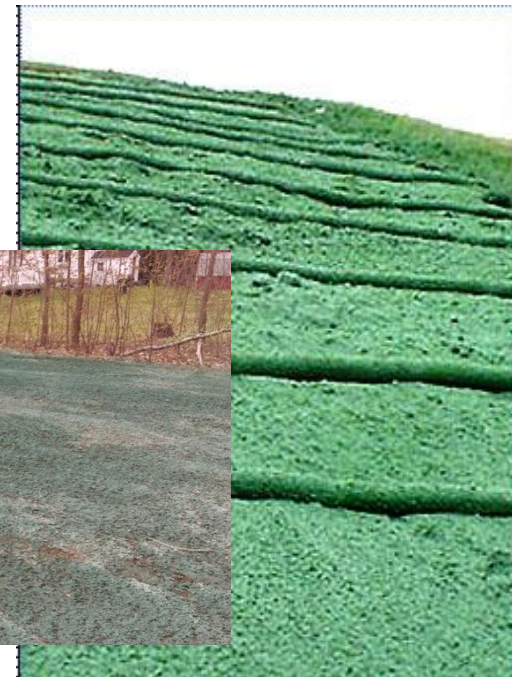
Silt fence has been added and streets were swept.



Exits have been swept and cleaned. No sediment track out is present.

# Challenges

- Effective erosion control
- Active vs. inactive requirements
- Sediment basins
- Other pollutants
- Representative sampling
- Repeat violations or inadequate corrective actions



# Key Takeaways

## Inspections

- Check that the SWPPP reflects what the site is doing and REAPs are available onsite
- Talk to the people responsible for implementing the SWPPP; talk to multiple people individually

## Follow-up

- Follow-up immediately after inspection – and transfer responsibility to the discharger
- Use the tools available to achieve compliance – escalate enforcement when necessary

- [r2stormwater@waterboards.ca.gov](mailto:r2stormwater@waterboards.ca.gov)