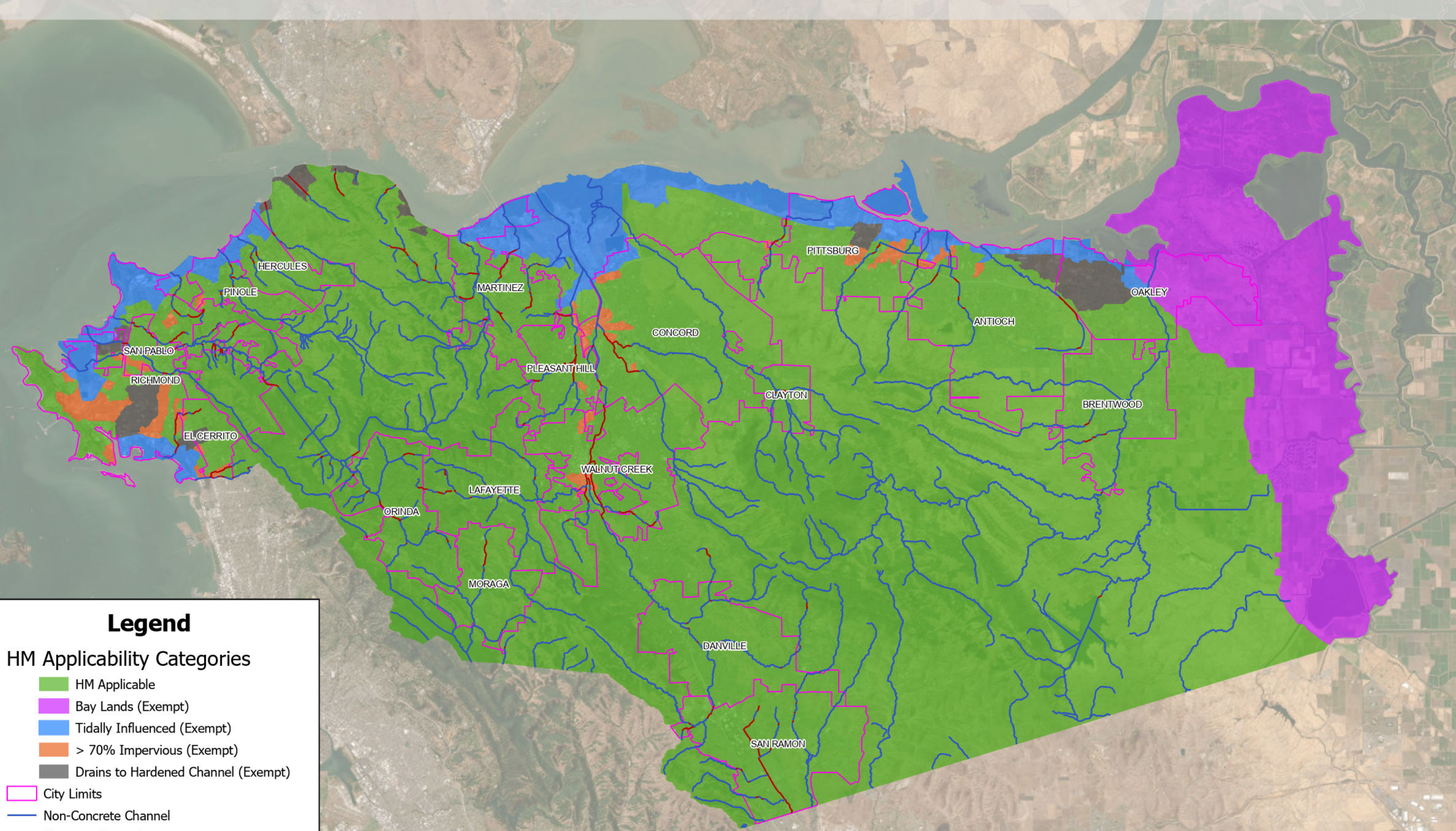


# 2023 DRAFT Hydromodification Management Applicability Map for Contra Costa Jurisdictions



## Legend

- HM Applicability Categories**
- HM Applicable
  - Bay Lands (Exempt)
  - Tidally Influenced (Exempt)
  - > 70% Impervious (Exempt)
  - Drains to Hardened Channel (Exempt)
  - City Limits
  - Non-Concrete Channel
  - Concrete Channel

