

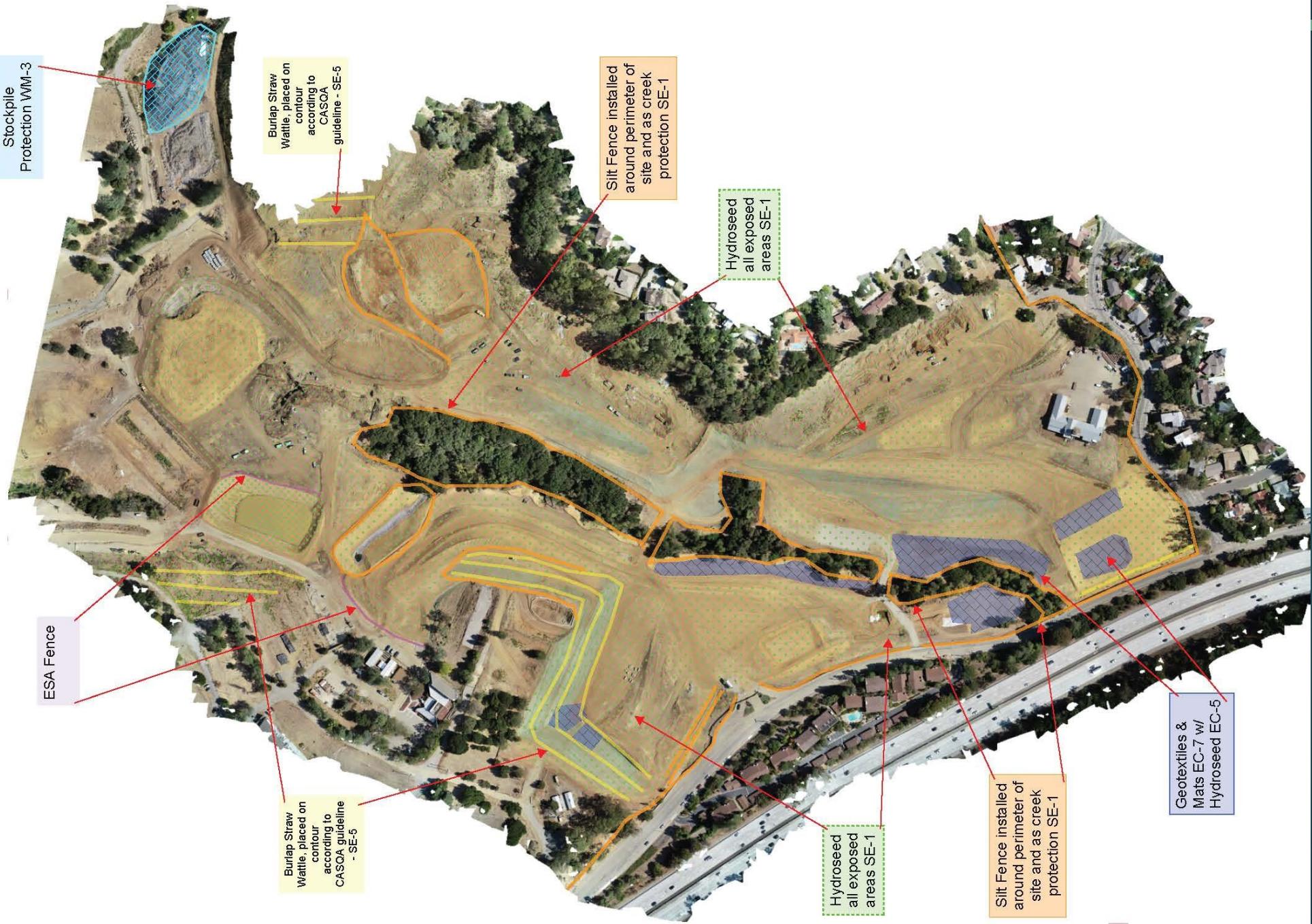
City of Oakland Case Study



DENNIS LARKS, CITY OF OAKLAND
MARCH 30, 2022



CONTRA COSTA
CLEAN WATER
PROGRAM



Stockpile Protection WM-3

Burlap Straw Wattle, placed on contour according to CASQA guideline - SE-5

Silt Fence installed around perimeter of site and as creek protection SE-1

Hydroseed all exposed areas SE-1

ESA Fence

Burlap Straw Wattle, placed on contour according to CASQA guideline - SE-5

Hydroseed all exposed areas SE-1

Silt Fence installed around perimeter of site and as creek protection SE-1

Geotextiles & Mats EC-7 w/ Hydroseed EC-5

Before
the
rain



3



CONTRA COSTA
CLEAN WATER
PROGRAM

Before
the
rain



4



CONTRA COSTA
CLEAN WATER
PROGRAM

Before
the
rain

5



CONTRA COSTA
CLEAN WATER
PROGRAM

After
the
rain



6



CONTRA COSTA
CLEAN WATER
PROGRAM

Day
after
the
rain



7



CONTRA COSTA
CLEAN WATER
PROGRAM

Damage after the rain



Two
weeks
after the
rain



CONTRA COSTA
CLEAN WATER
PROGRAM