

Site 38 – Marsh Creek

Site Coordinates **609263, 4192377** Site Datum: **UTM WGS 1984**

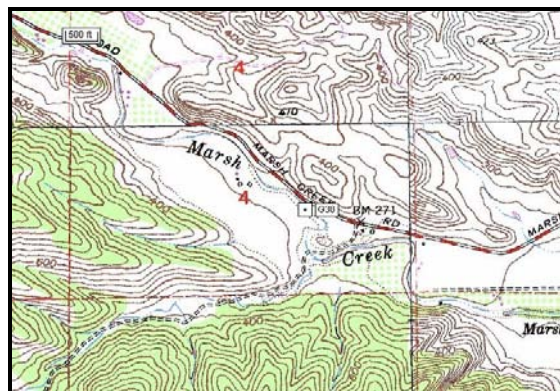
| | | | |
|-----------------------------|--------------------|------------------------|----------------|
| | | Confinement Class | MC (h) |
| Entrenchment Ratio | 1.9 (M) | Active bank erosion | Low (m) |
| Entrainment Ratio | 0.00041 (M) | Active sediment supply | Mod (m) |
| Secondary Attributes | | Bed Materials | Cobble |
| Bankfull Width (ft) | 22.5 | Bank Materials | Silt |
| Bankfull Depth (ft) | 1 | Average Gradient | 0.62% |
| Width/Depth Ratio | 22.5 (m) | CLASSIFICATION | MEDIUM |

(m) = Medium Criterion; (h) = High Criterion

RISK JUSTIFICATION: Primary attributes both support ‘medium’ classification. Coarse substrate combined with limited evidence of erosion under existing conditions (a notable exception occurring at an upstream paved ford); moderate supply of sediment that will help maintain an alluvial mantle and prevent incision; high width/depth ratio, indicating the ability to distribute shear stress during large flows; large roughness elements that will retard stream power.



SITE NOTES: Locally steep eroded bluffs providing a moderate amount of sediment supply. Banks mostly stable and well vegetated. Occasional boulders and bedrock blocks in channel. Channel incised about 9 feet into valley floor.



Attachment 4, Appendix B

